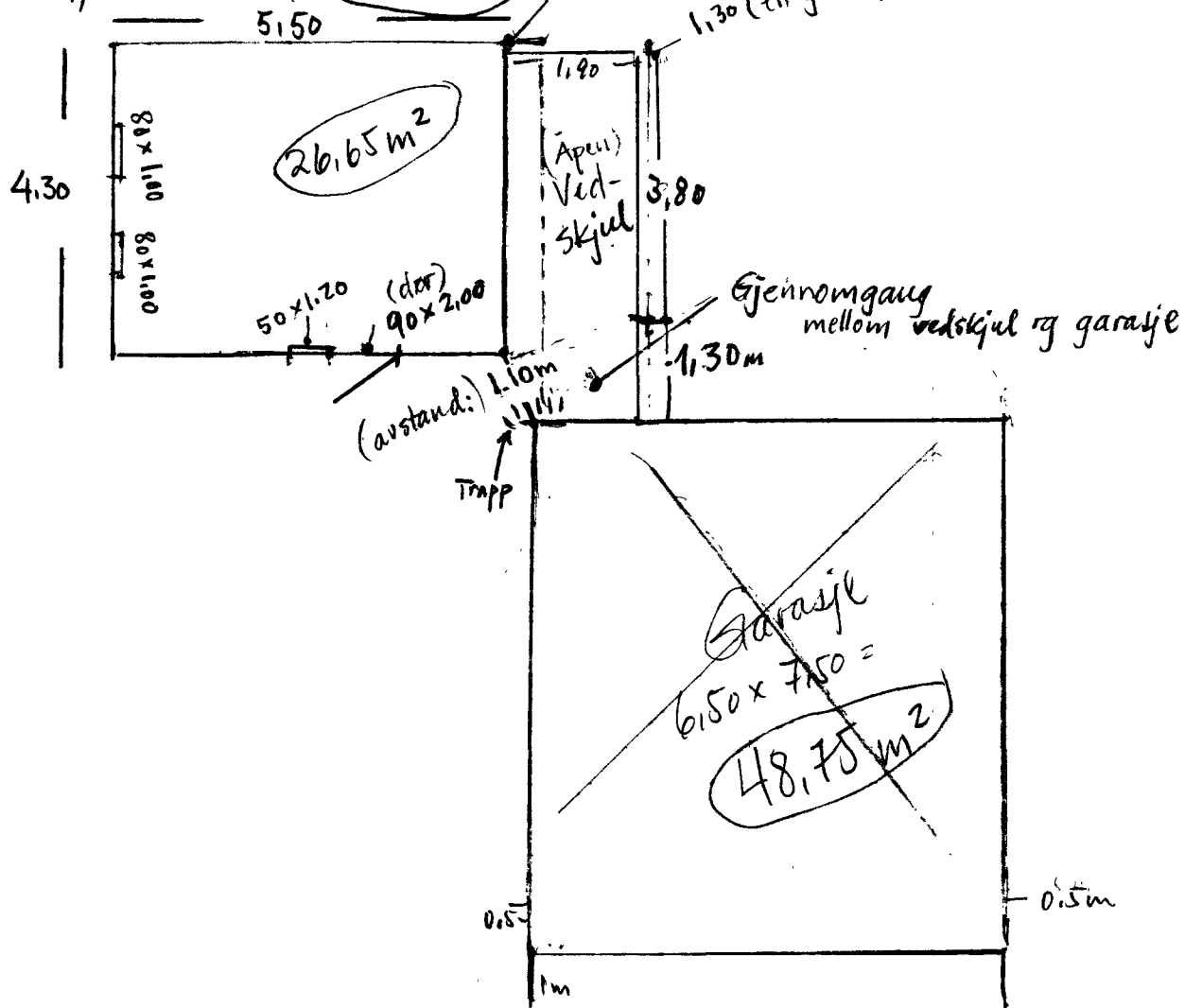


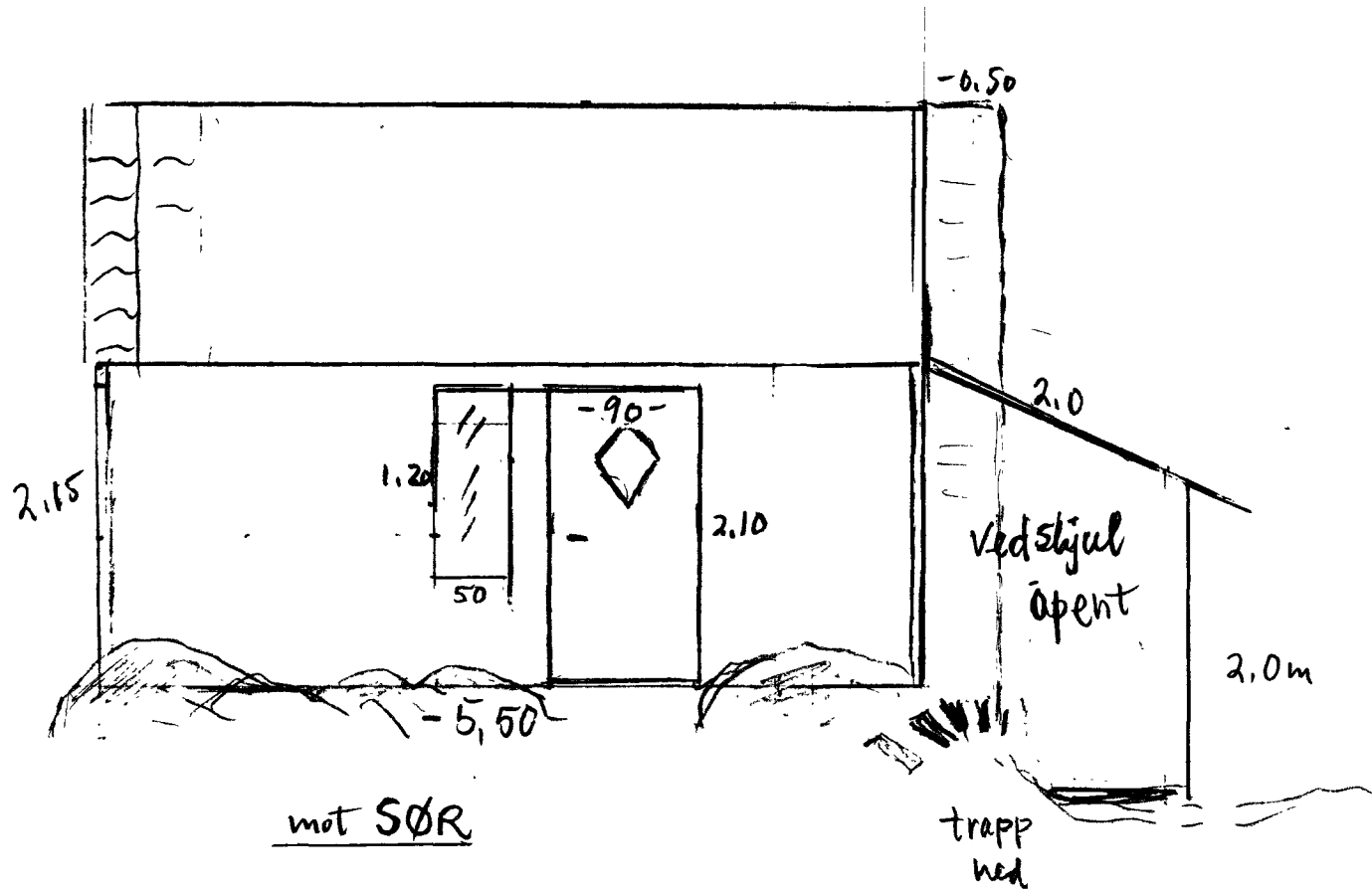
★ Redskap/Snekkerbod:  $26,65\text{m}^2$



Snekker/redskapsbod (+ vedstijul)

(26,65 m<sup>2</sup>)

2



Rep math Modulweise Realfang

$$x^2 - 6x + 8 = 0 \quad a=1 \quad b=-6 \quad c=8$$

$$x = \frac{-b \pm \sqrt{b^2 - 4ac}}{2a}$$

$$x = \frac{-(-6) \pm \sqrt{(-6)^2 - 4 \cdot 1 \cdot 8}}{2 \cdot 1}$$

$$x = 4$$

$$x = 2$$

$$b) 3(x-5) + x = -2x + 3$$

$$3x - 15 + x = -2x + 3$$

$$6x = 3 + 15$$

$$\frac{6x}{6} = \frac{18}{6}$$

$$x = 3$$

$$d) \frac{x}{2} + \frac{x}{3} > \frac{1}{5} \quad | \text{ Her mit wir f\u00e4hren FIU = 2 \cdot 3 \cdot 5 = 30}$$

$$\frac{30x + 20x}{2 \cdot 3} > \frac{30}{5}$$

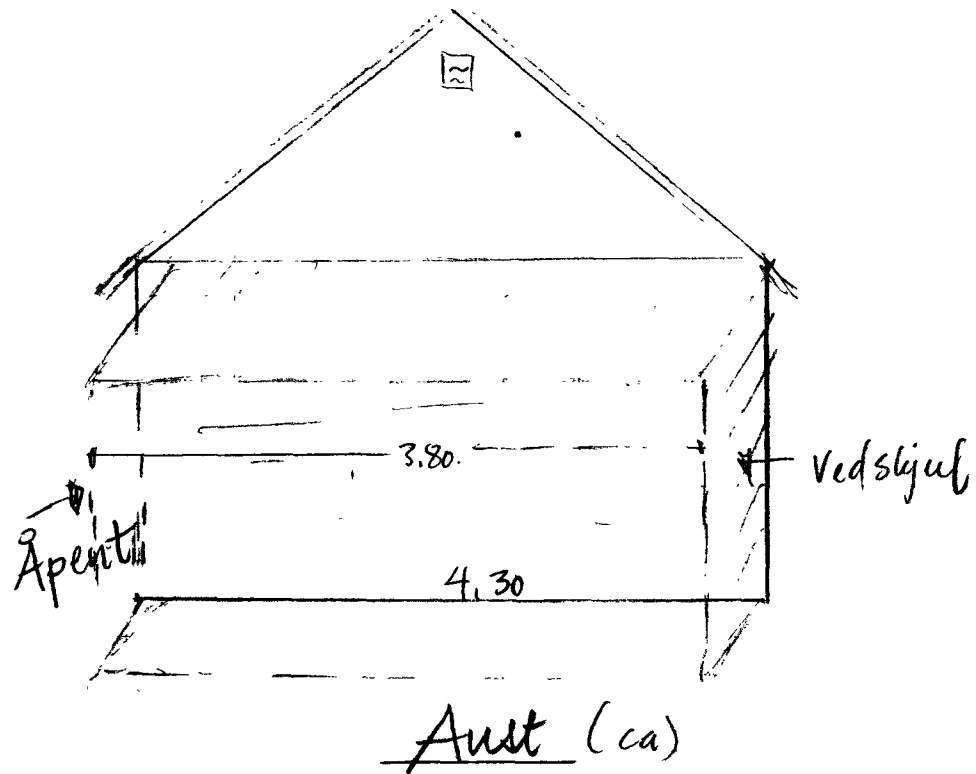
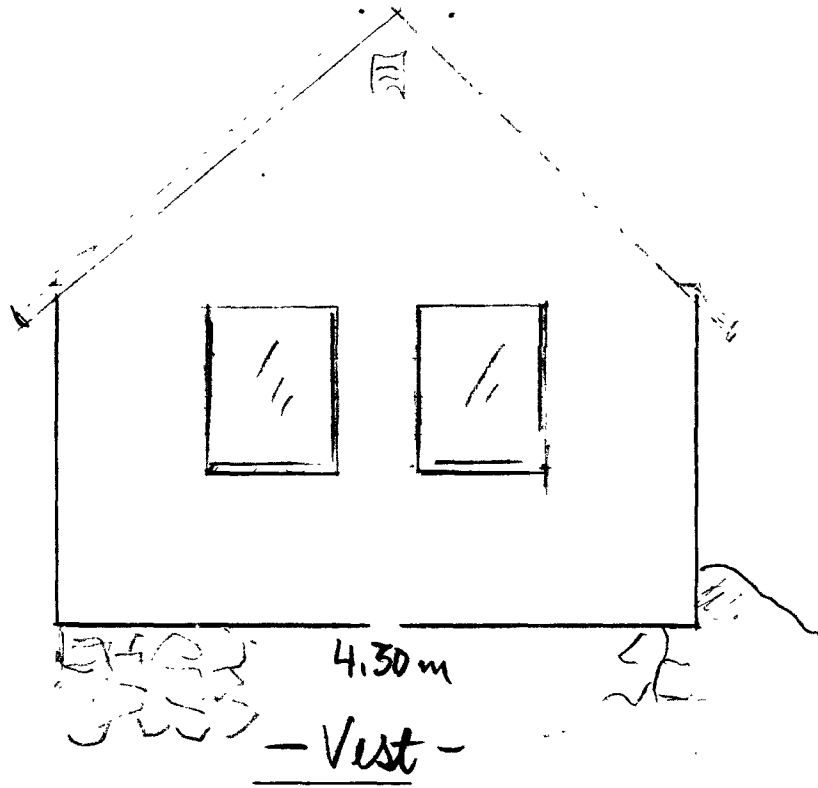
$$15x + 10x > 6$$

$$\frac{25x}{25} > \frac{6}{25}$$

$$x > \frac{6}{25}$$

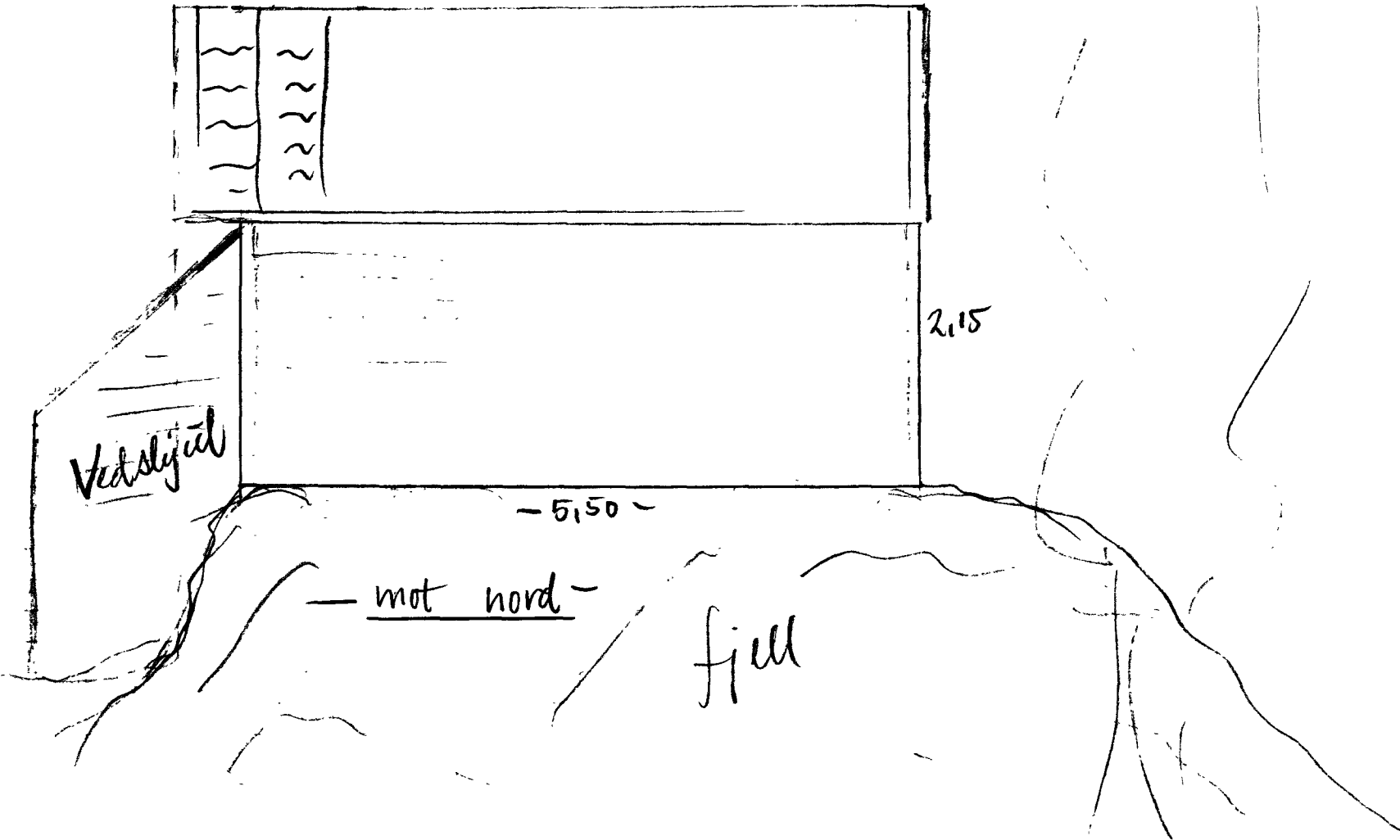
Snelket/Redskapsbod (vest - aust) (26.65m<sup>2</sup>)

4



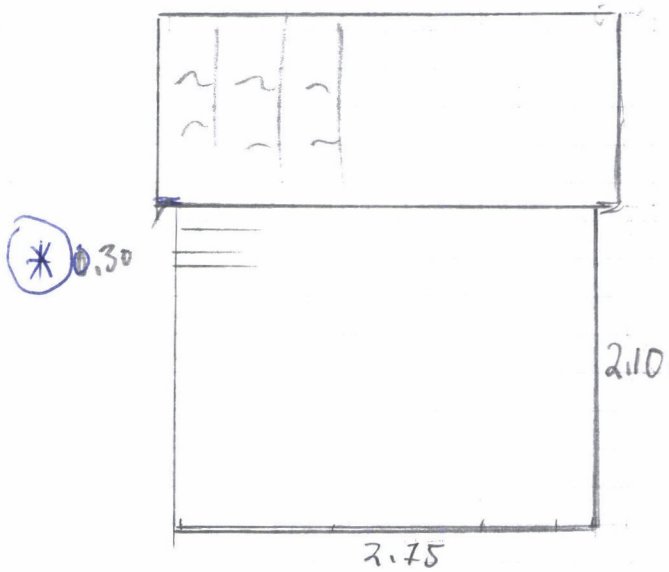
Snekker/Redskapobod (nord) (26,65m<sup>2</sup>)

3

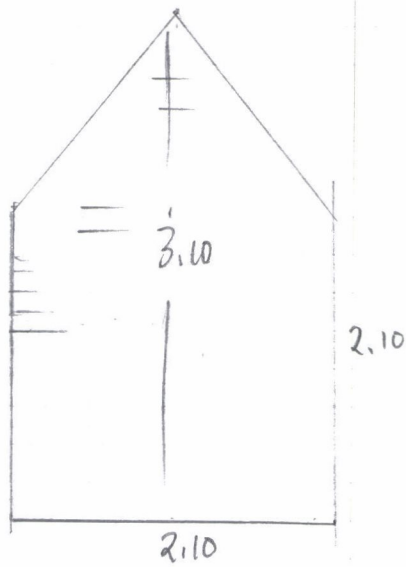


- Hagebod - 5,78 m<sup>2</sup>

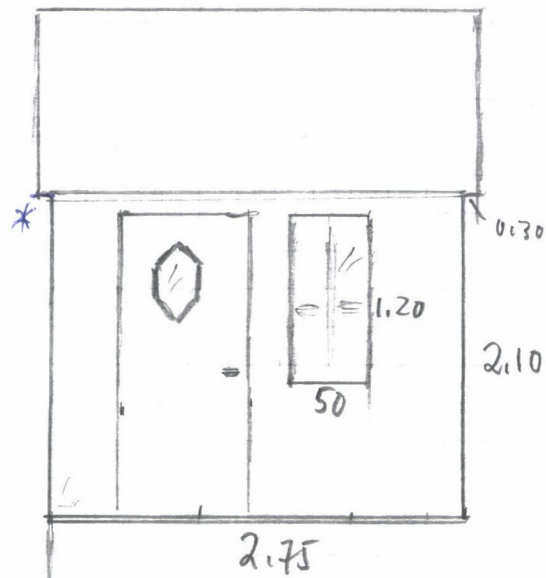
5



- Nord -



- Aust/Vest -



- Sør -

