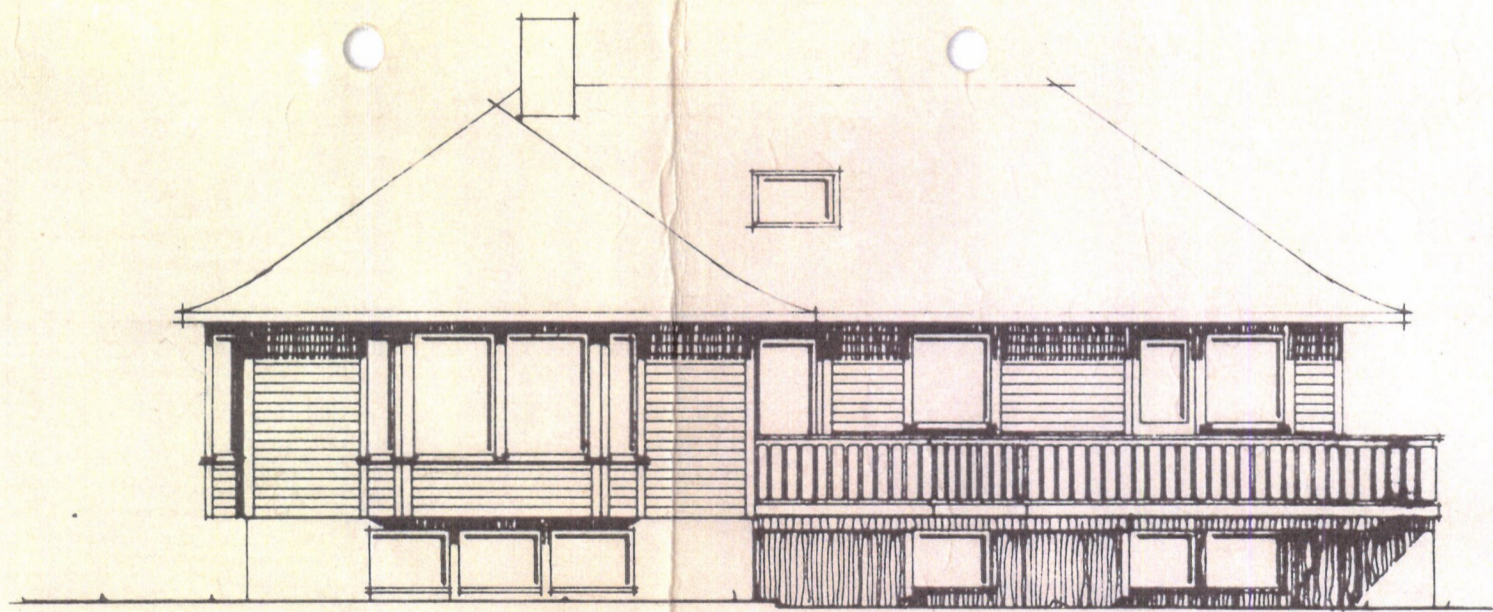
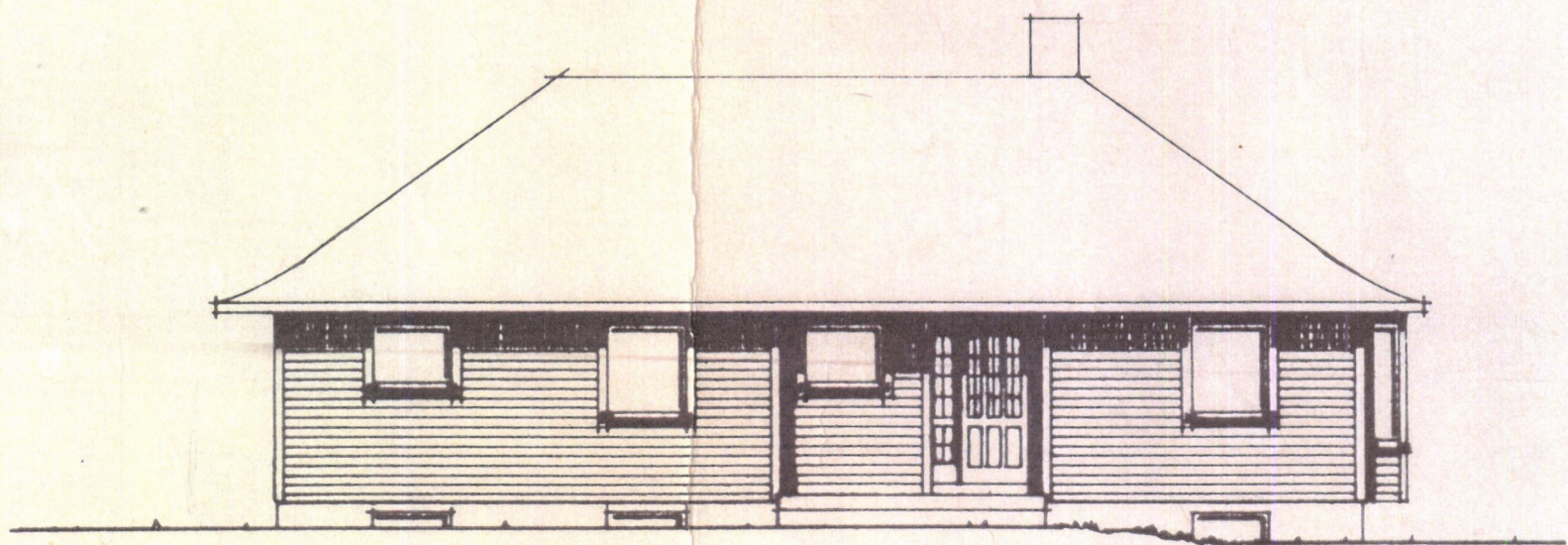


PLAN AV 1 ETG Bruttoarea $(1\,440 \cdot 1\,110) - (900 \cdot 360) - (360 \cdot 0,60) + (4,70 \cdot 0,55) = 127,8\text{ m}^2$
 B A $(14,06 \cdot 10,76) - (900 \cdot 360) - (360 \cdot 0,60) + (4,70 \cdot 0,55) = 119,3\text{ m}^2$



FASADE MOT SØR



FASADE MOT NORD