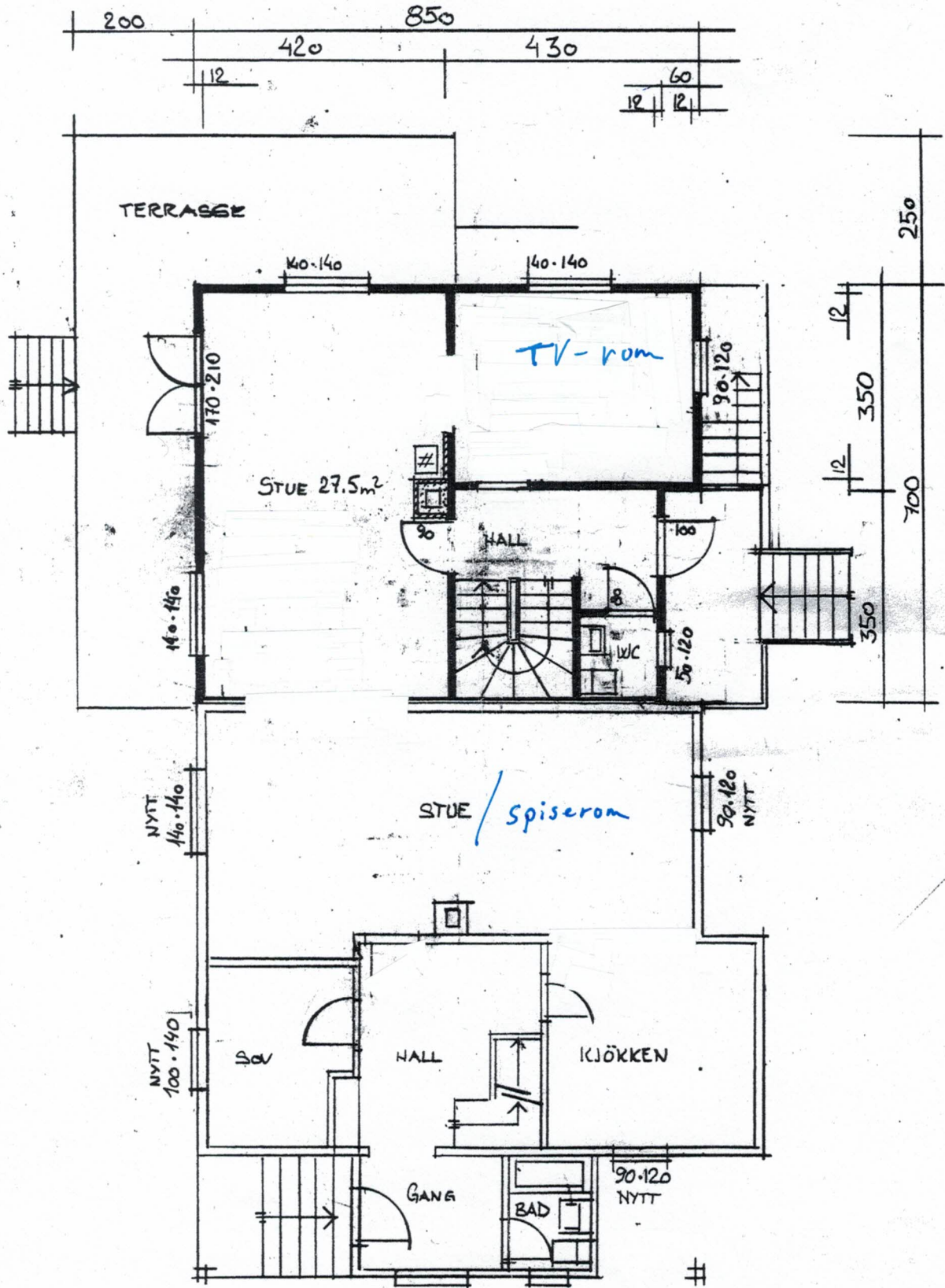


$$\begin{aligned} \text{AREAL EKS. BYGG} &: 8,5 \cdot 7,5 + 4,2 \cdot 2 + 3,7 \cdot 1 = 75,85 \text{ m}^2 \\ \text{AREAL TIL BYGG} &: 8,5 \cdot 7,0 - 3,5 \cdot 0,6 = 57,40 \text{ "} \\ \hline \text{AREAL 1. ETG.} &= 133,25 \text{ m}^2 \end{aligned}$$



PLAN 1. ETG.