

2-g. behandlet 19/22

7

OMSØKTE 4
BOLIGER
A = 1,9 da
TOMTER

BALL-
LØKKE

BOLIGER
A = 11,7 da

BOLIGER
A = 1,2 da

VEI HER IKKE
A
D
B

1 OMSØKT TOMT (E)

BOLIGER
A = 8,3 da

KV.
LEK

B

BOLIGER
A = 5,4 da

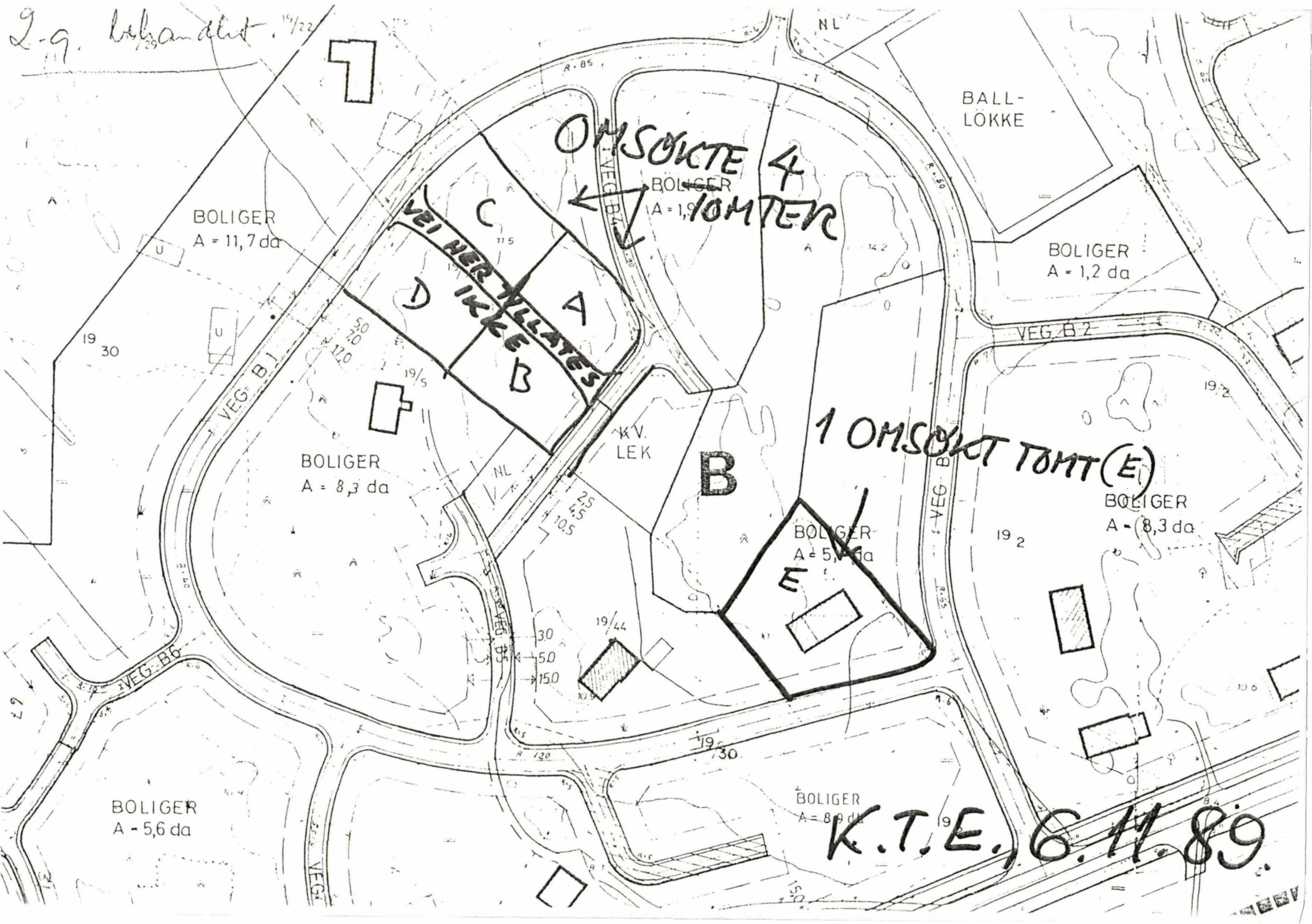
BOLIGER
A = 8,3 da

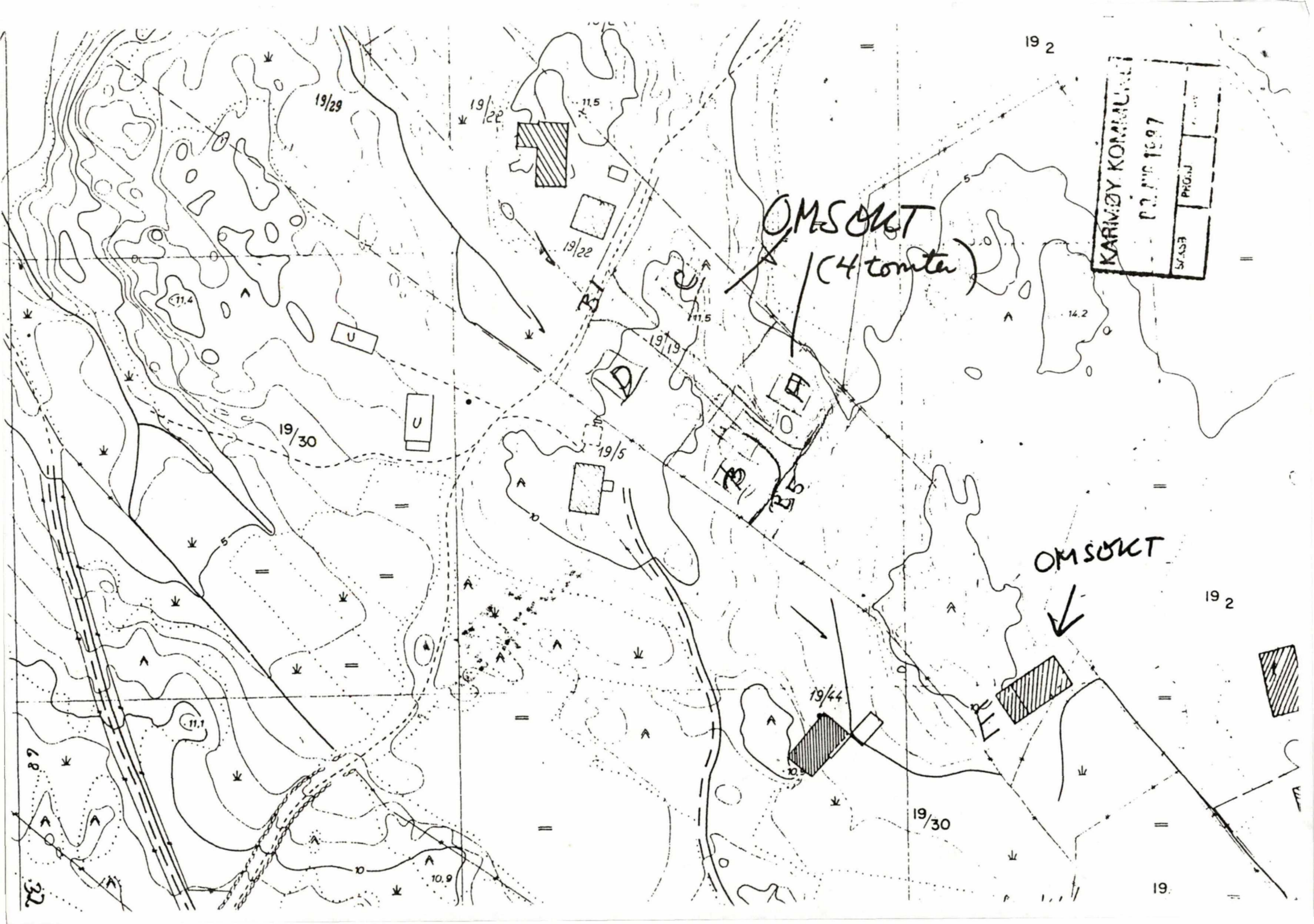
E

BOLIGER
A = 5,6 da

BOLIGER
A = 8,9 da

K.T.E., 6.11.89





KARIMBY KOMMUNAL
P. 2. 1997
SWA.SJ PROJ

OMSOKT
(4 tomter)

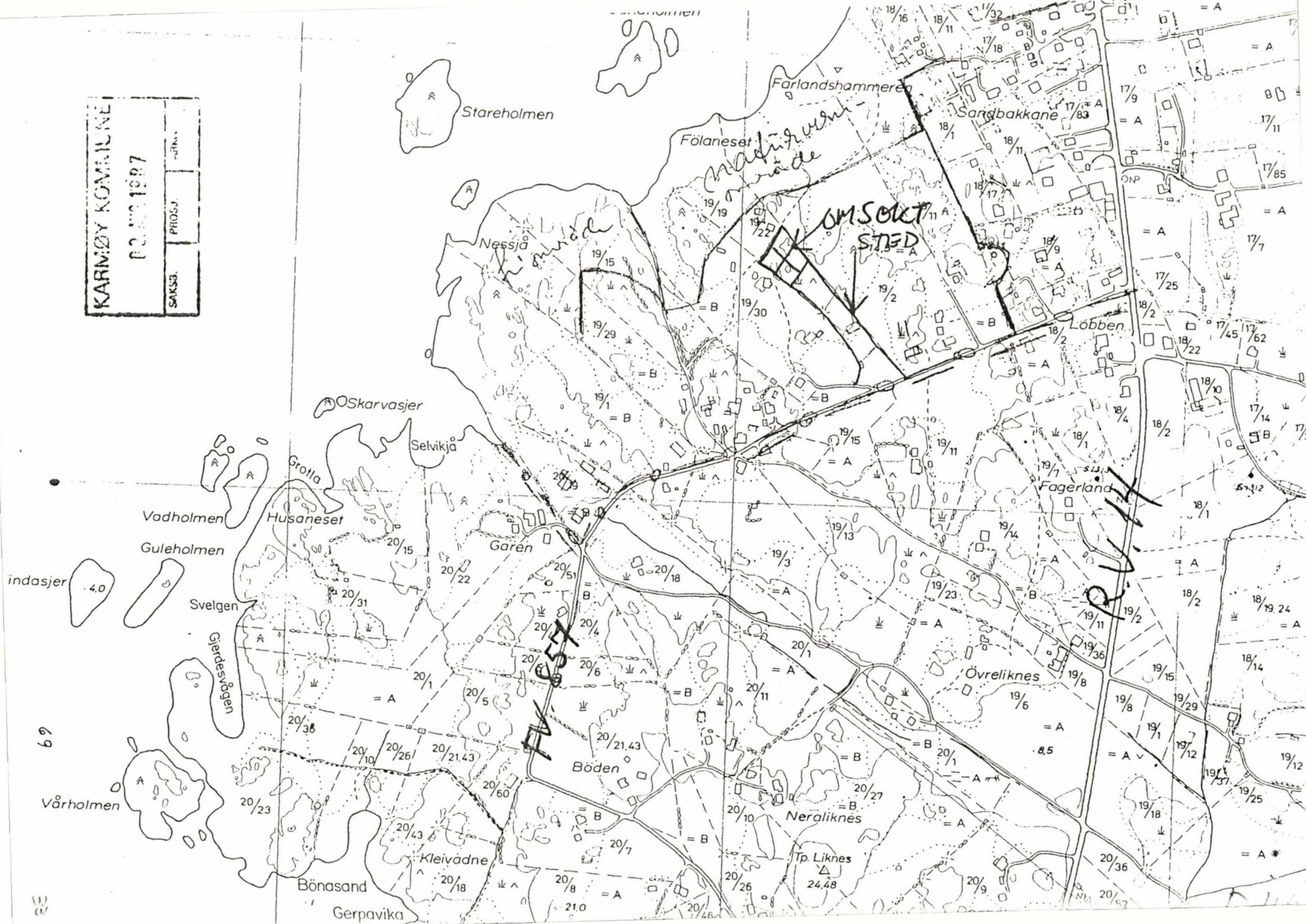
OMSOKT

32

19

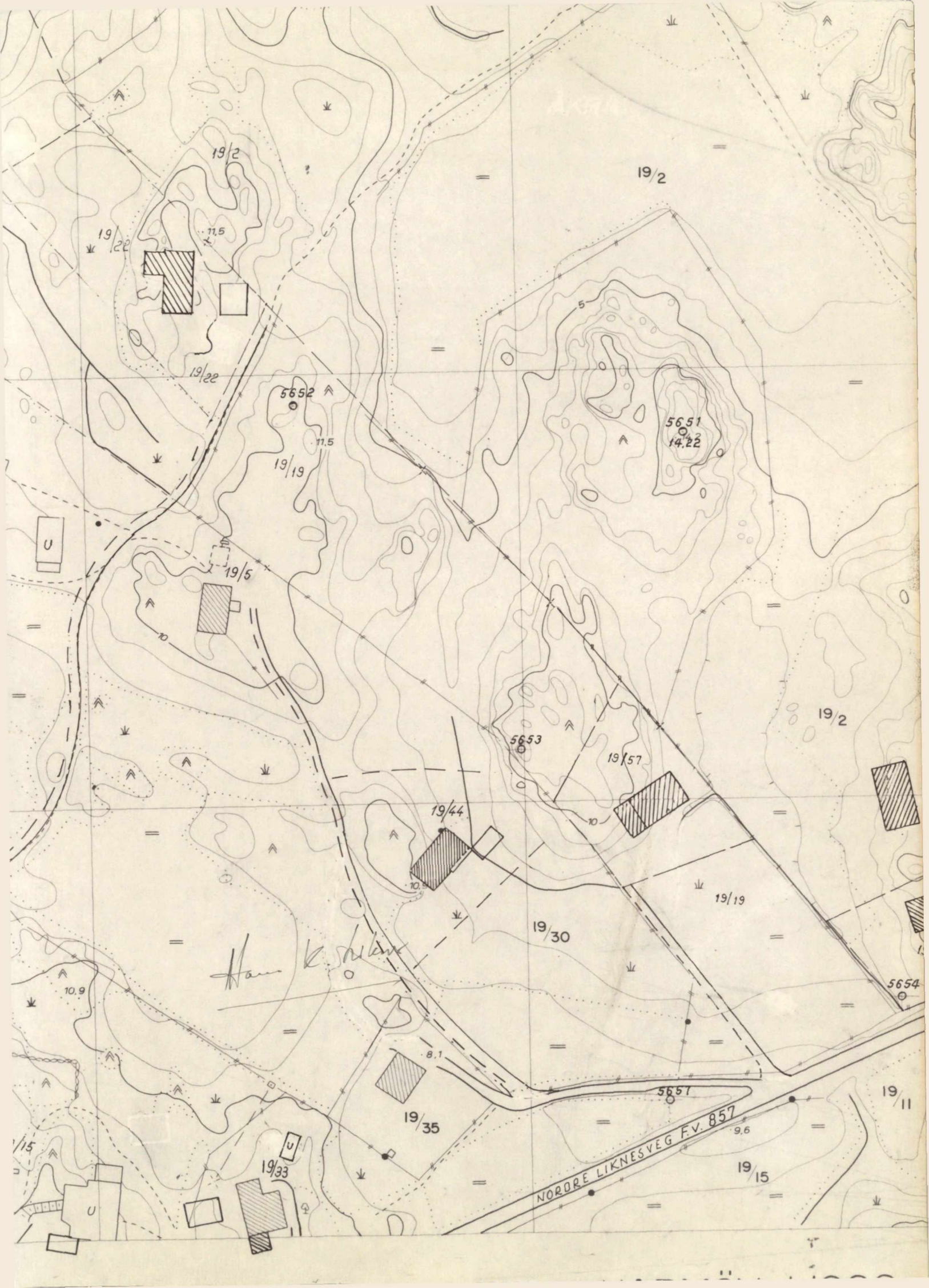
KARNØY KOMMUNE
 PC. NR. 1987

SAKSJ.	PROSJEKT	DRUKK.
--------	----------	--------



69

69



Haukstein

NORDRE LIKNESEVEG F.V. 857

U

U

U

5652

5651
14.22

5653

5654

19/2

19/2

19/22

11.5

19/22

19/19

19/5

19/44

19/57

19/19

19/30

19/35

19/11

19/15

19/15

19/33

10.9

8.1

5657

9.6

2-g. behandlet 19/22

7

OMSØKTE 4
BOLIGER
A = 1,9 TOMTER

BOLIGER
A = 11,7 da

BALL-
LØKKE

BOLIGER
A = 1,2 da

BOLIGER
A = 8,3 da

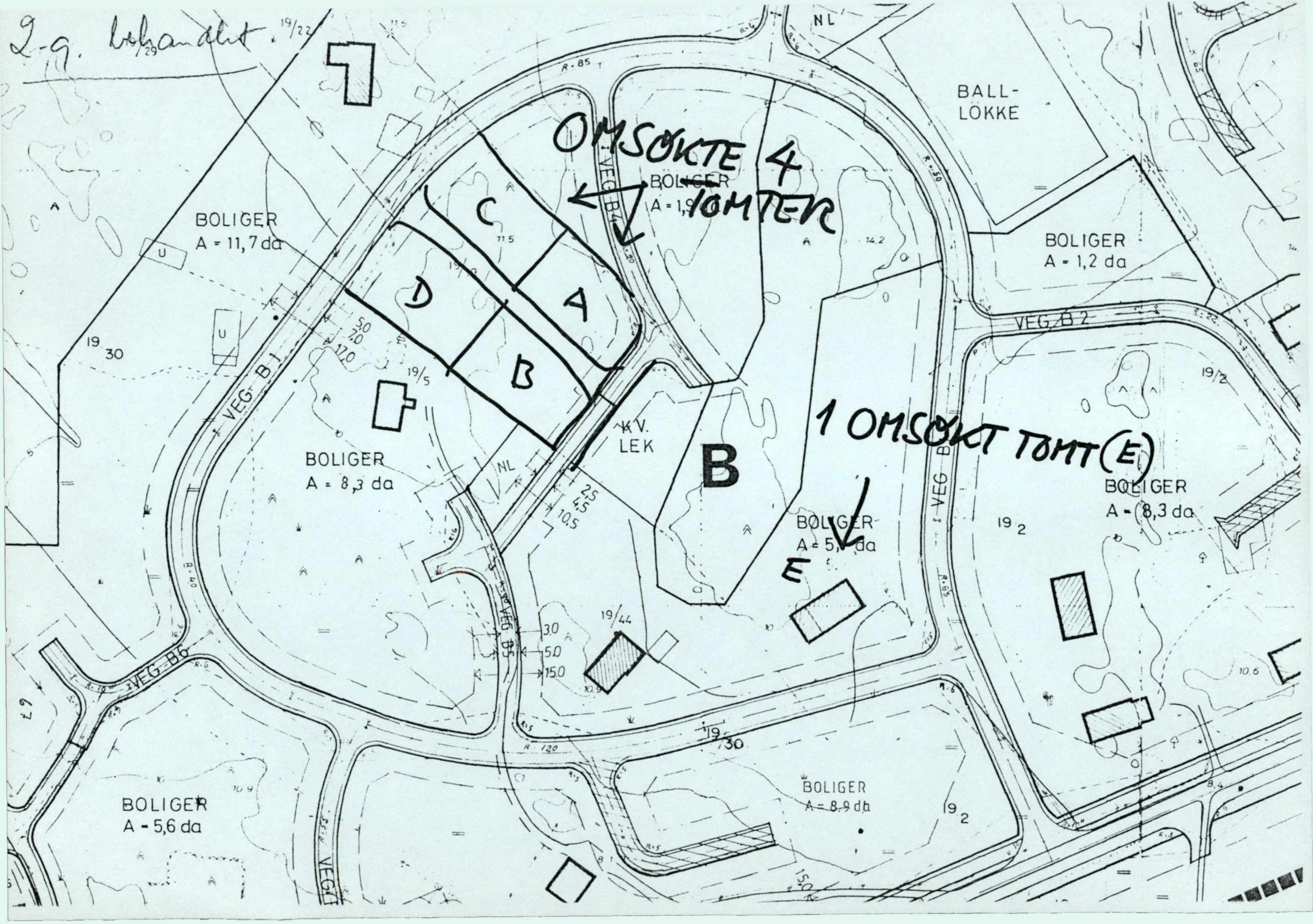
1 OMSØKT TOMT (E)

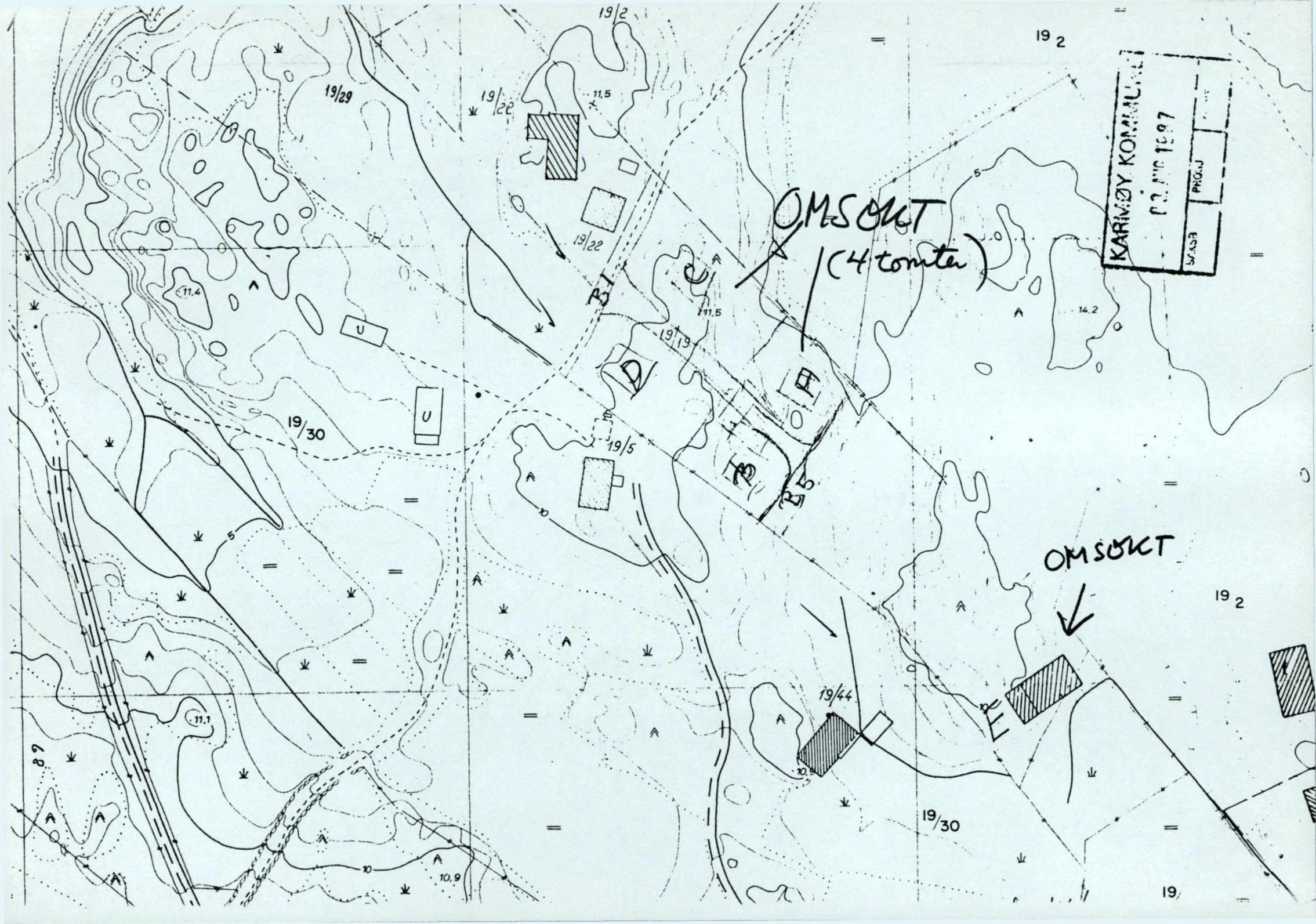
BOLIGER
A = 5,1 da

BOLIGER
A = 8,3 da

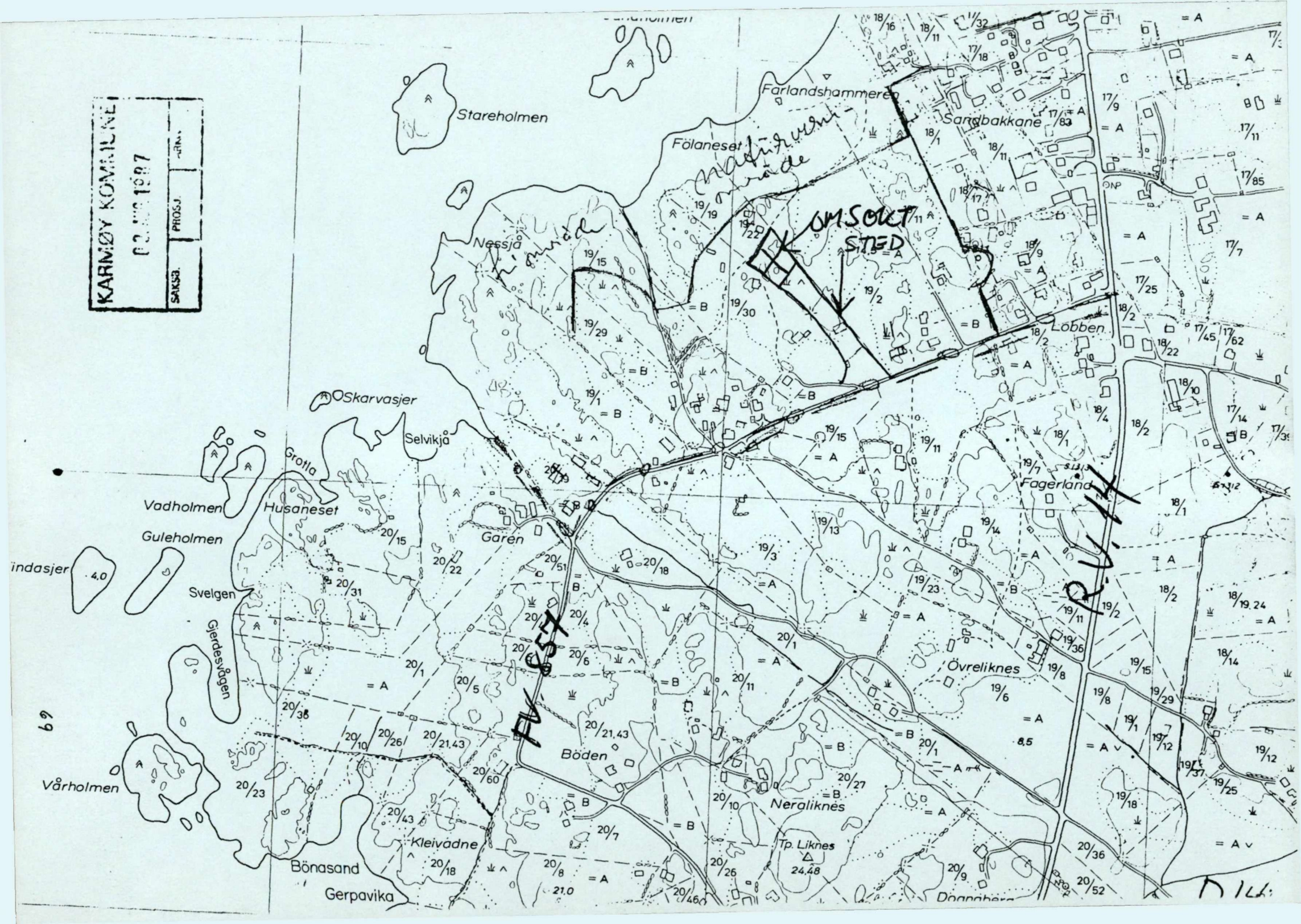
BOLIGER
A = 5,6 da

BOLIGER
A = 8,9 da

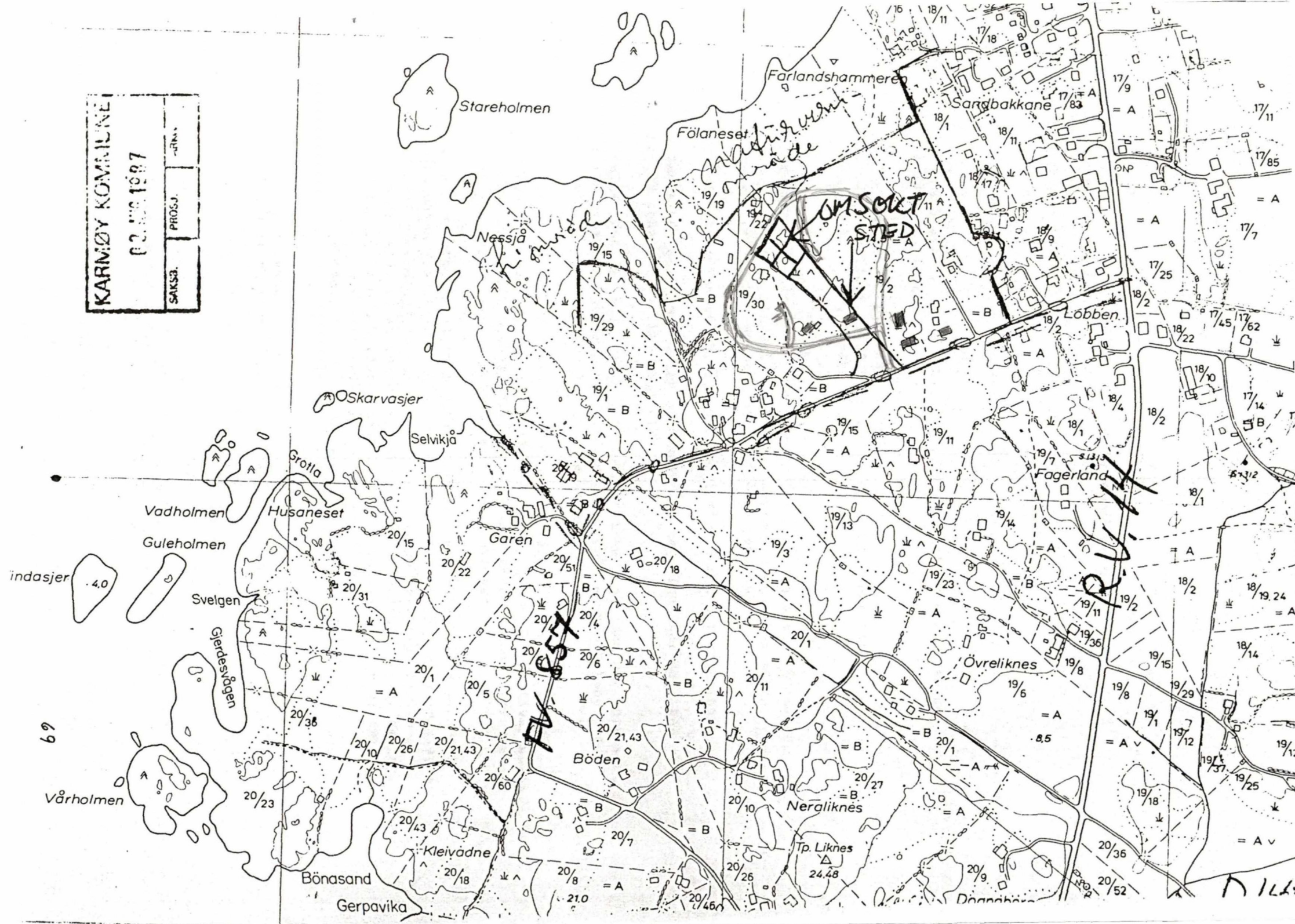




KARLØY KOMMUNE
 12. JUNI 1987
 SAKSØ. PROSJ. -RIN.

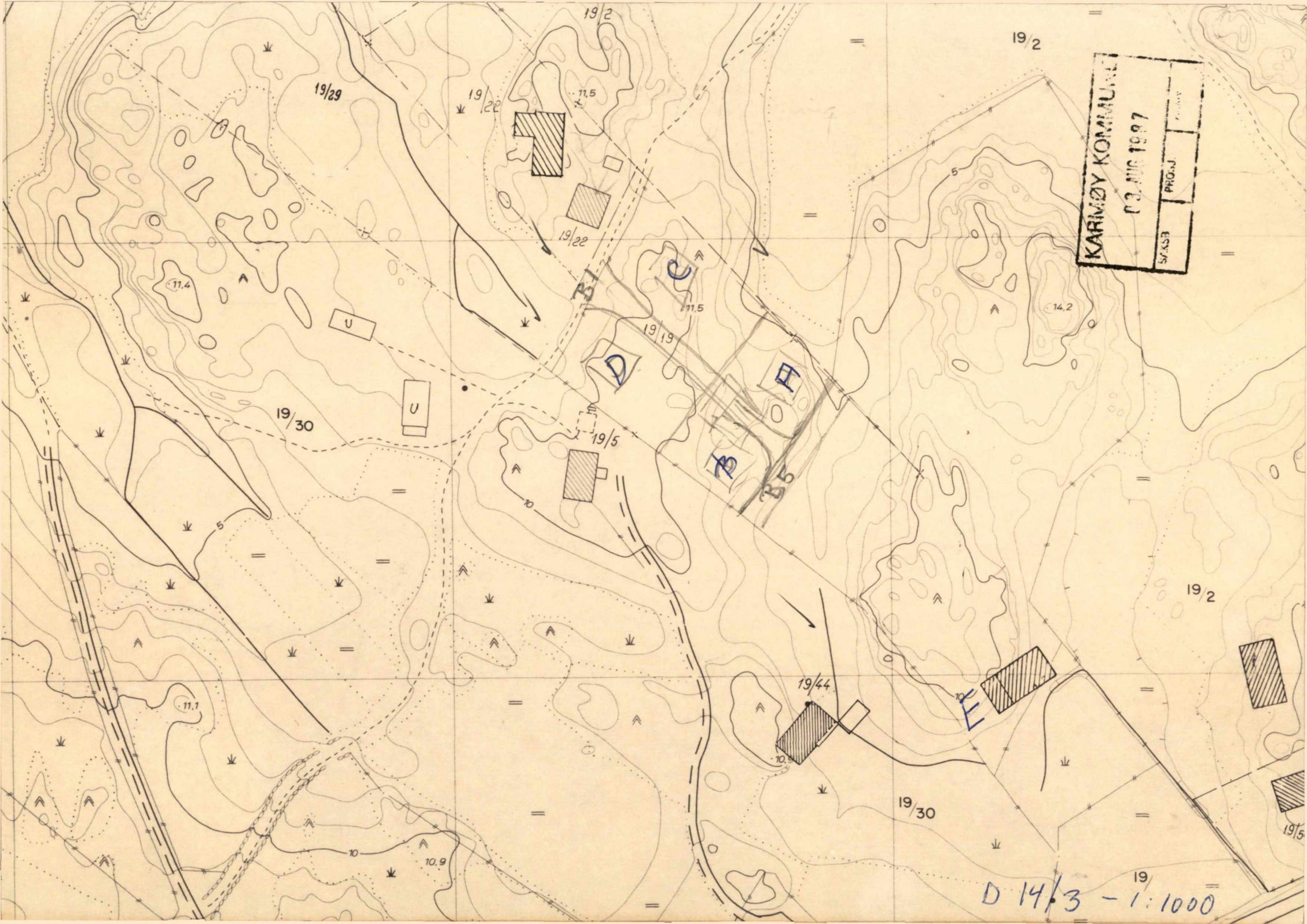


KARNØY KOMMUNE
 02. JUN 1987
 SAKSØ. PROSJ. -STN.



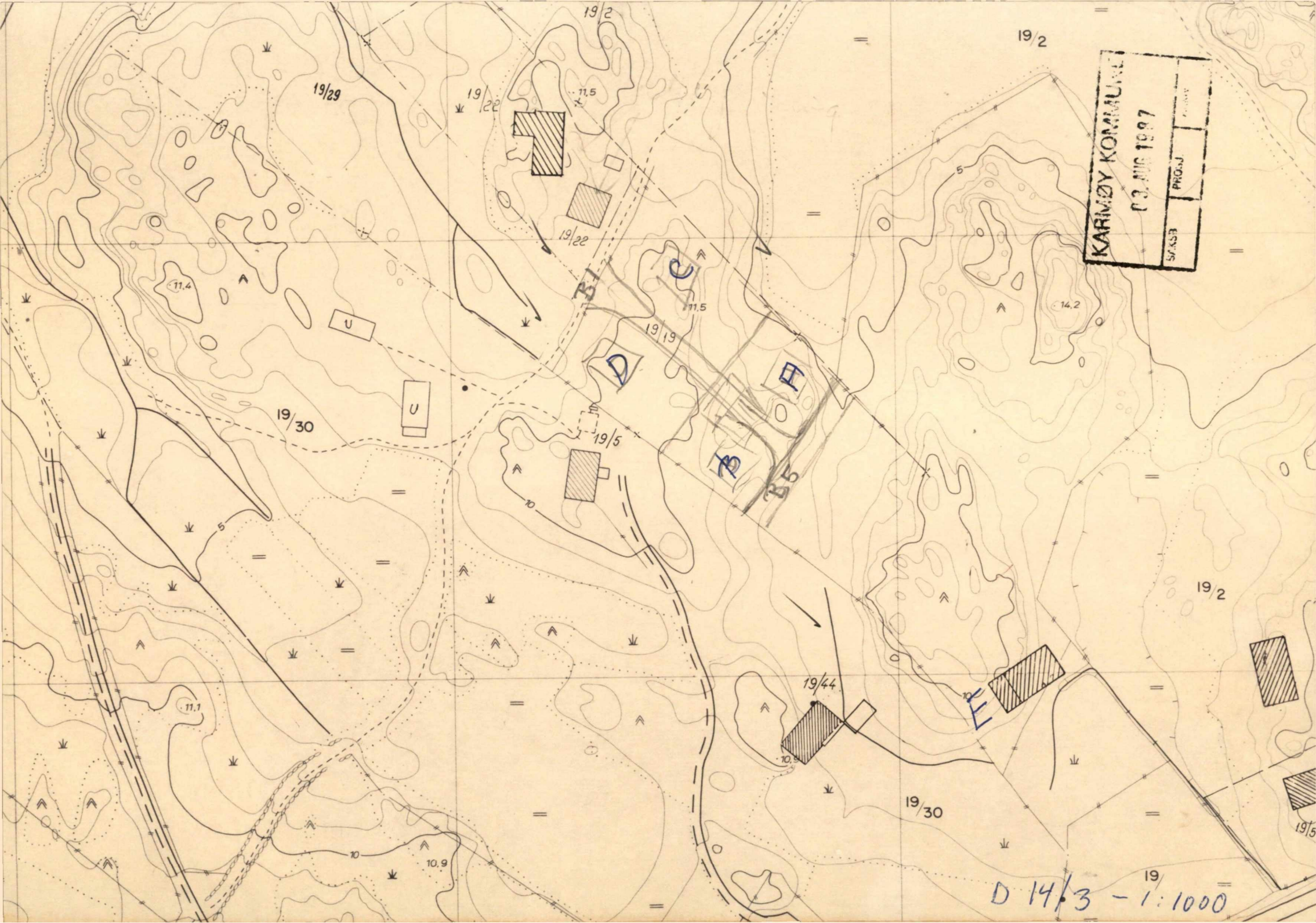
69

D. 144



KARIMØY KOMMUNE
03. JUNI 1997
STASB PROSJ

D 14/3 - 1:1000



KARIMØY KOMMUNE
13. JUNI 1997
SFA/SB PRO-SJ

D 14/3 - 1:1000

2-g. behandlet 19/22

1

OMSÖKTE 4
BOLIGER
A = 1,9
TOMTER

BALL-
LÖKKE

BOLIGER
A = 11,7 da

BOLIGER
A = 1,2 da

BOLIGER
A = 8,3 da

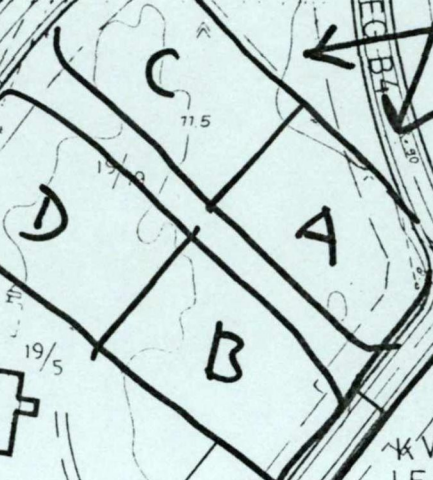
1 OMSÖKT TOMT (E)

BOLIGER
A = 8,3 da

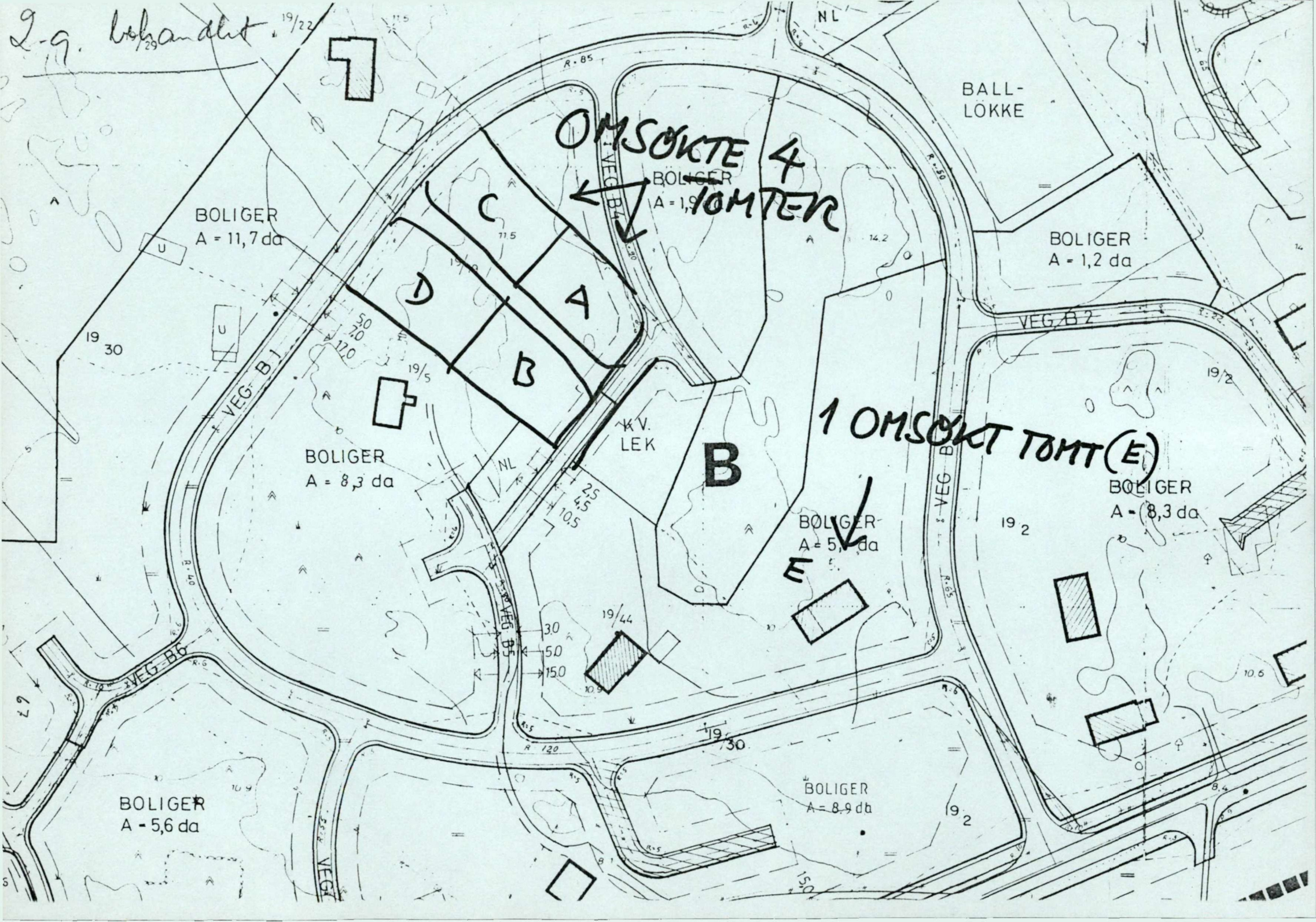
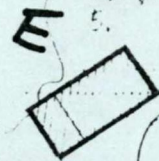
BOLIGER
A = 5, da

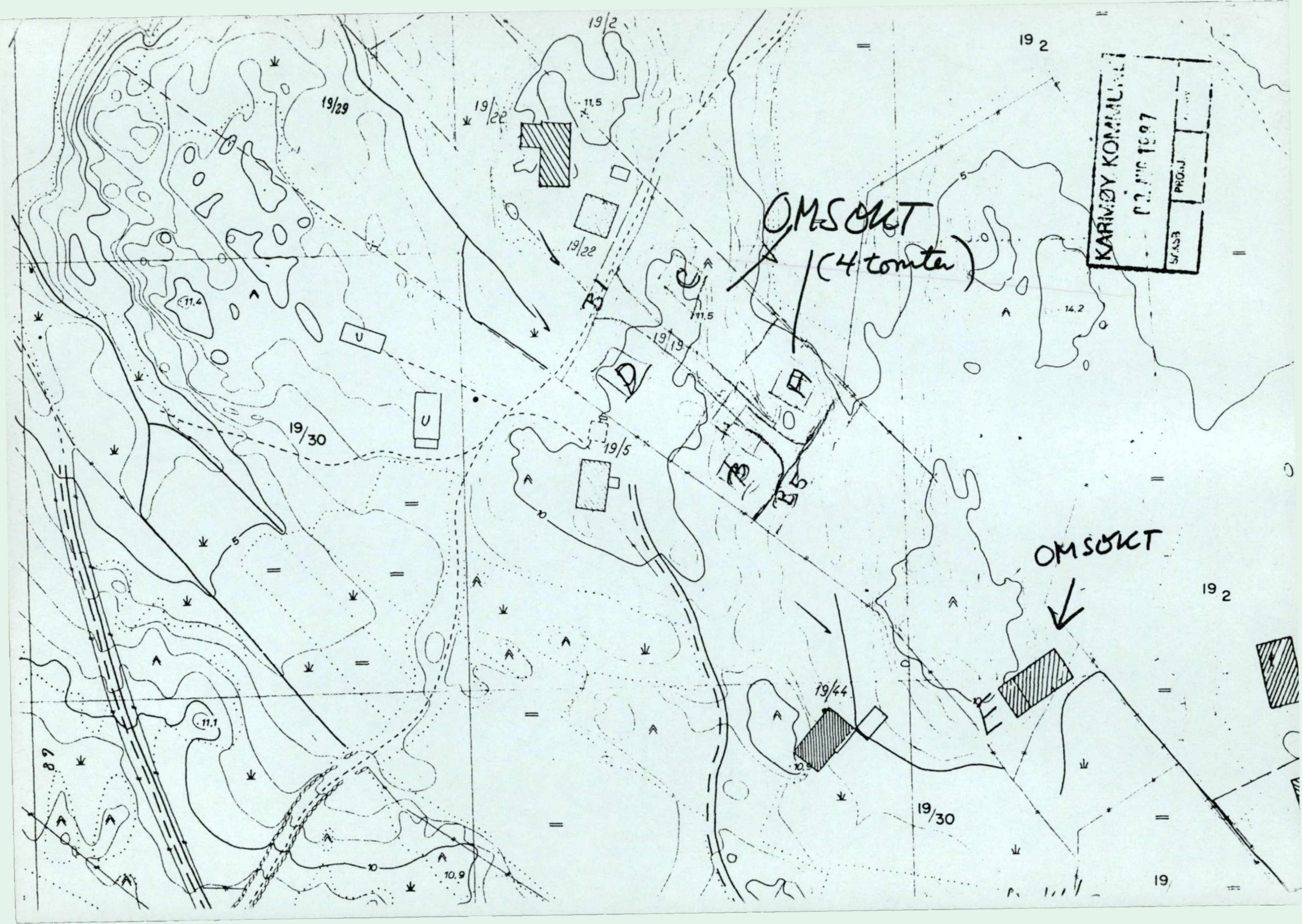
BOLIGER
A = 5,6 da

BOLIGER
A = 8,9 da



B



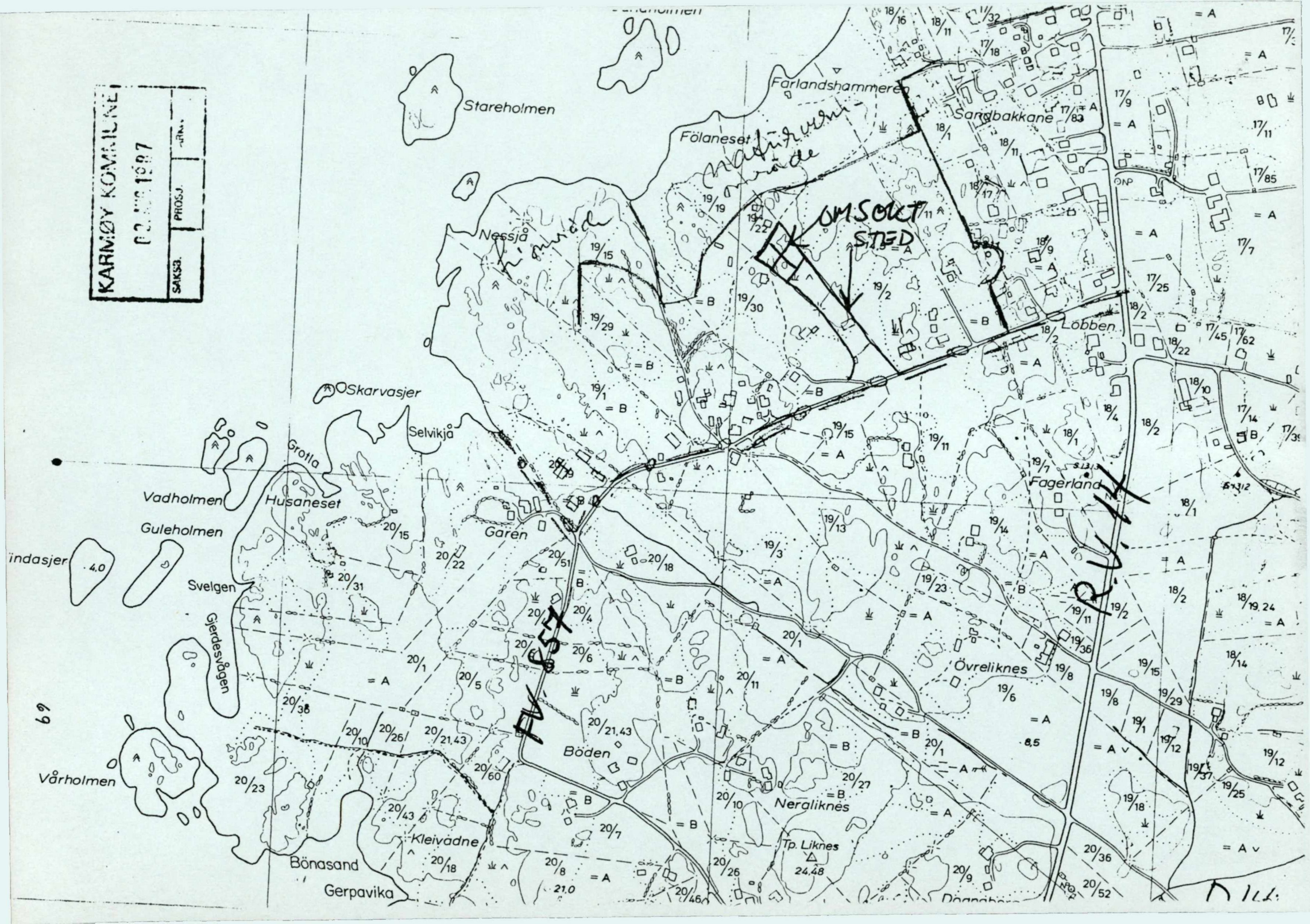


OMSOCT
/ (4 tomta)

OMSOCT

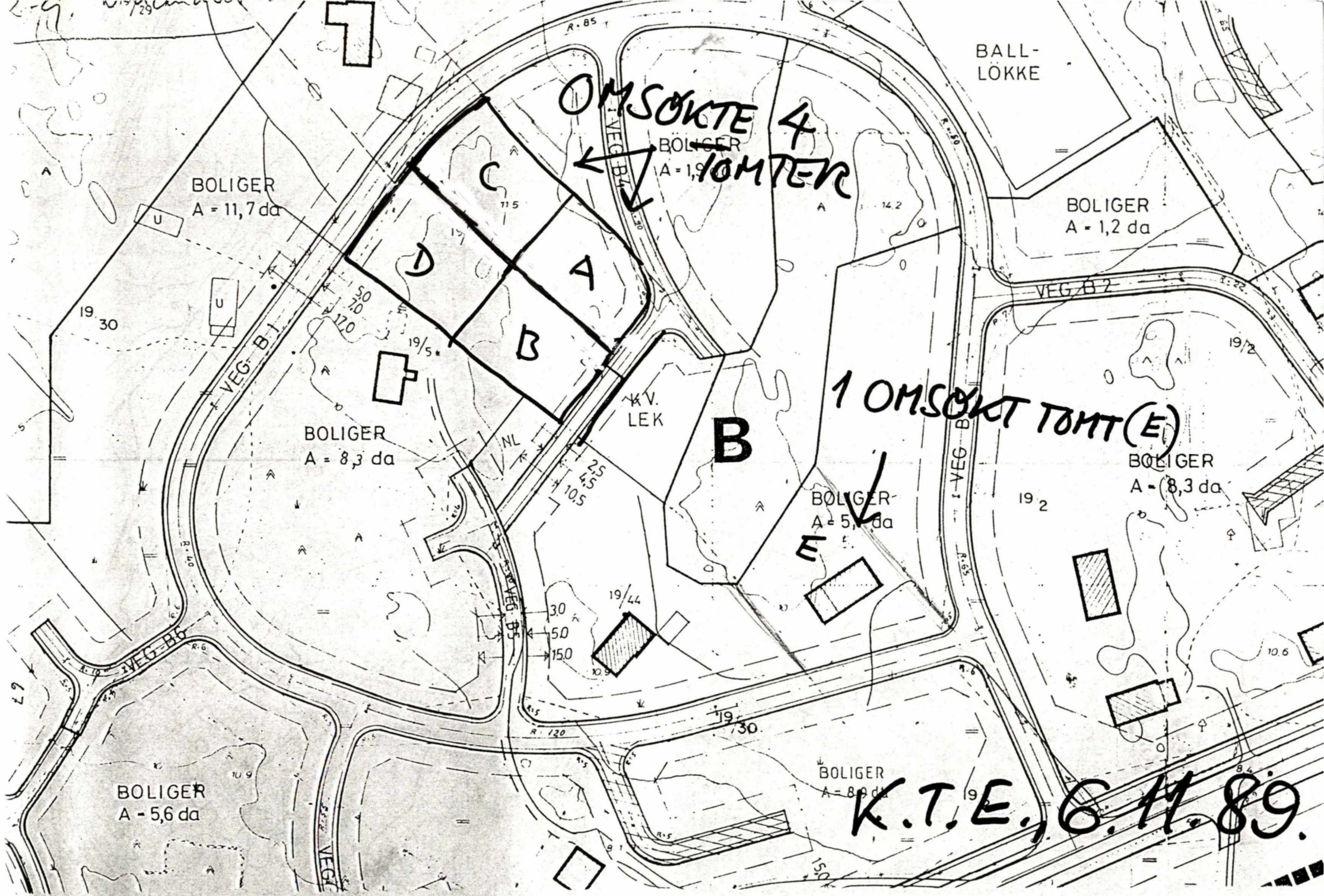
KARIMOY KOMMUNA
P. 2. JUNI 1997
ESVJS
PRONJ

KARMOY KOMMUNE
 02.08.1997
 SAKS3. PROS3. -JRM.



69

D. 111



OMSOEKTE 4 TOMTER

1 OMSOekt TOMT (E)

K.T.E., G.M. 89.

2-g. behandlet 19/22

1

OMSØKTE 4
TOMTER

BALL-
LOKKE

BOLIGER
A = 11,7 da

BOLIGER
A = 1,9 da

BOLIGER
A = 1,2 da

BOLIGER
A = 8,3 da

K.V.
LEK

B

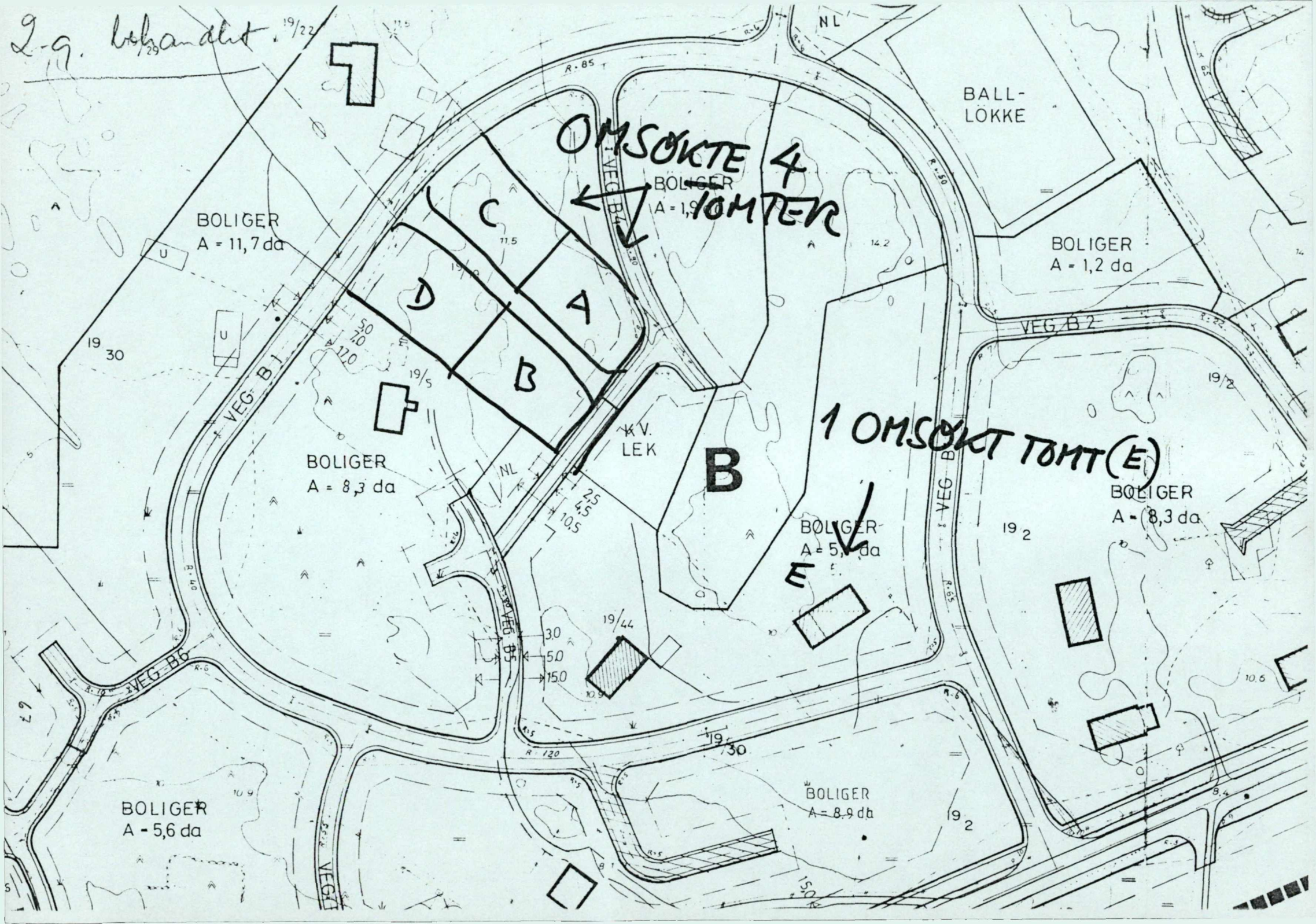
1 OMSØKT TOMT (E)

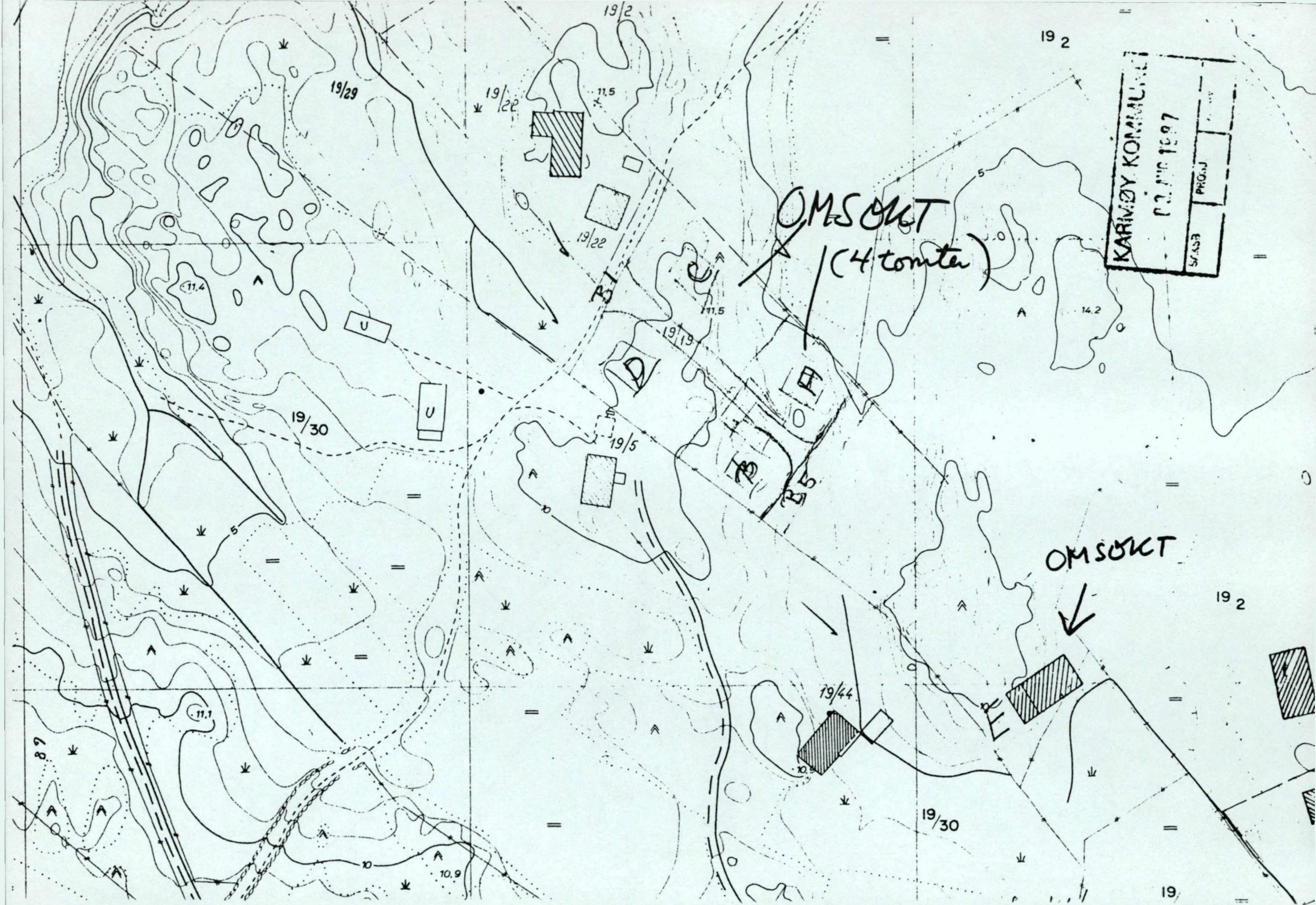
BOLIGER
A = 5,6 da

BOLIGER
A = 8,3 da

BOLIGER
A = 5,6 da

BOLIGER
A = 8,9 da





OMSOCT
(4 tonter)

KARIMDY KOMMUNA
02.10.1997
57.433

OMSOCT

19/29

19/22

19/22

19/22

19/30

19/5

19/19

19/44

19/30

10.9

11.4

11.5

11.1

14.2

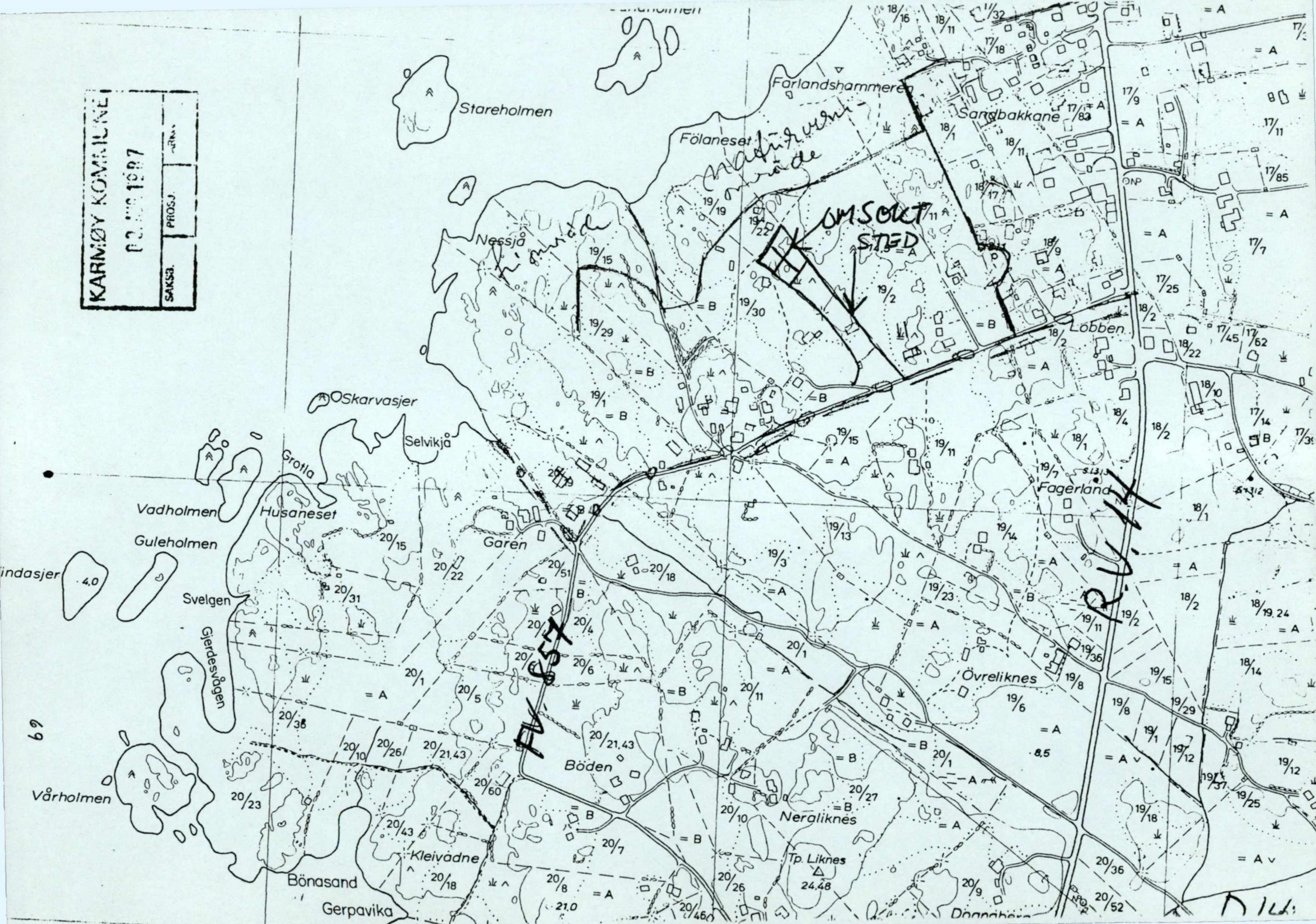
8.9

19 2

19 2

19

KARMOY KOMMUNE	22. JUNI 1987	PROS.
		SAKS.



KARMØY KOMMUNE		
02.08.1987		
SAKSJ.	PROSJ.	TRINN

